

# NEW AMERICAN LUXURY

EXCLUSIVELY FOR  
THE LUXURY TRADE  
PROFESSIONAL

THE PREMIERE ISSUE  
NOVEMBER / DECEMBER 2011  
VOLUME 1, ISSUE 1

DESIGN INNOVATIONS / 032

*Betty Duff's interior design for NBA all-stars*

GLASS CONSTRUCTION / 079

*Federal meets modern in historic Georgetown*

VAN DAM CUSTOM BOATS / 098

*Handcrafted custom boats for the seafaring elite*

ALBERT, RIGHTER & TITTMANN ARCHITECTS / 105

*A grown-up camp retreat on Martha's Vineyard*



## MOUNTAIN LIVING

**High-end homes on rugged  
Western terrain**

40

### GOOD KARMA

Henrik Fisker,  
founder of Fisker  
Automotive,  
discusses his sexy  
sports car with a  
conscience

67

### THE MOBILE CONCERGE

Vertu's stunning  
handsets offer  
exclusive lifestyle  
assistance at the  
push of a button

100

### SPEED + SPECTACLE

New York-based  
Asymptote  
Architecture's Abu  
Dhabi hotel built  
around a Formula 1  
racetrack





## CLASSIC MARTHA'S VINEYARD LIVING

ALBERT, RIGHTER & TITTMANN ARCHITECTS CREATES A MODERN INTERPRETATION OF THE ISLAND'S TRADITIONAL CAPE VERNACULAR

### WORDS

Iya Bakare

### PHOTOGRAPHY

Brian Vanden Brink  
[briandvandenbrink.com](http://briandvandenbrink.com)

### PROJECT

Little Camp  
Martha's Vineyard, MA

### DESIGN PRACTICE

Albert, Righter & Tittmann  
Architects, Inc.  
262 Washington St., 2<sup>nd</sup> Floor  
Boston, MA 02108  
617 451 5740  
[alriti.com](http://alriti.com)

### DESIGN TEAM

Jacob Albert, Karen Kim,  
and Eric Rochon

### SIZE

4,600 sq. ft.

### COMPLETED

2009

### CONTRACTOR

Joseph Chapman  
Doyle Construction  
[doyleconstructionmarthasvineyard.com](http://doyleconstructionmarthasvineyard.com)

### FURNISHINGS

Victoria Baker  
Su Casa Designs  
[sucasa-designs.com](http://sucasa-designs.com)

**Located on picturesque Martha's Vineyard,** Little Camp embodies a classical New England design aesthetic that is at once relevant and timeless. Jacob Albert, of Albert, Righter & Tittmann Architects, says the project was inspired by something simple: a rustic house located right next to the land of the client's ideal getaway spot. The home, a century-old vacation retreat, lent its aesthetic to Little Camp, a new home in the spirit of an old, traditional camp but with all of the modern comforts a client could want.

Such an influence pairs well with Albert, Righter & Tittmann Architects' design philosophy of incorporating the continuity of traditions with an excitement for new trends. Little Camp does just that, providing a relaxing escape for its owners. "It's about getting away from the cares of the city to find simplicity in life," Albert says.

The low-key, 4,600-square-foot waterfront home includes a 900-square-foot living porch. A separate 900-square-foot guest house sits nearby. "The plan of Little Camp is largely one-room deep to encourage cross ventilation and to take advantage of water views to the north, while also admitting sunlight from the south," Albert says.





The horizontal emphasis of the site's design keeps the profile low and, along with the muted gray-green trim and natural gray shingles, allows the house to blend in with its surroundings. Tree-trunk porch posts, exposed rafter tails cut in the shape of fish heads, and an entirely wood interior further evoke rustic camp imagery. A courtyard garden that embraces the entrance sets the tone for the property.

Albert, Richter & Tittmann Architects has always enjoyed the play between memory and invention, and at Little Camp this philosophy is clearly evident. It's most distinctly seen in the ceiling of the second-floor hall—covered in planks, it resembles the hull of a boat.

Throughout the house, intricate and smart design elements abound. The staircase features simply detailed newel posts and an interior window on the landing. Alcoves throughout the upstairs hallway provide light and seating areas. The master bedroom was designed to allow for views in two directions, and the cozy adjacent study features panoramic views. The master bathroom includes a claw-foot tub, painted wood walls, and vanity cabinets. This theme of refined simplicity continues to the guest house and the garage/workshop, both designed to complement the main quarters.

While all facets of the Little Camp project evoke older traditions, the home is executed with attention to modern design principles and techniques of energy conservation. It is a mixture suitable for Martha's Vineyard—Little Camp brings the traditional New England vernacular into the new millennium without detracting from its legacy. ●

#### PREVIOUS PAGE

Little Camp keeps a low profile, with a strongly horizontal emphasis. The second-floor rooms are contained within the eaves of the roof. The plan is long and thin to allow for cross breezes, views, and light from both sides.

#### 01 OUTDOOR LIVING

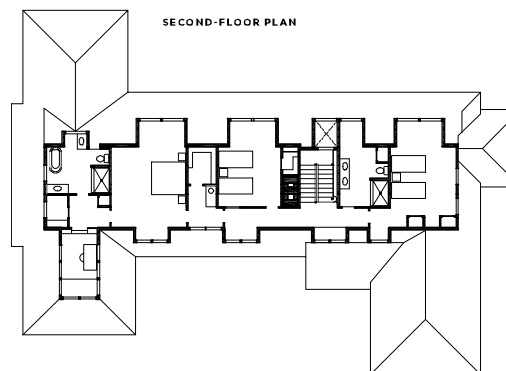
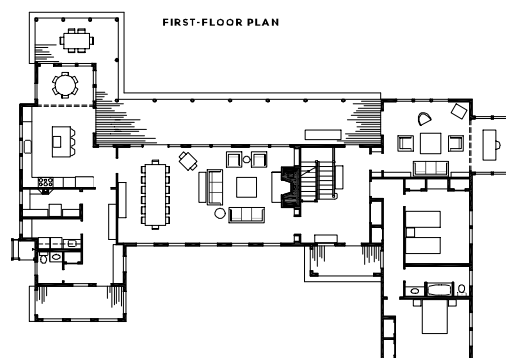
The 900-square-foot porch has many points of access from the interior and offers an easy flow to the lawn overlooking the water. The neighboring house visible in the distance inspired the camp-like flavor of Little Camp with its tree-trunk porch posts and exposed rafter tails.

#### 02 SECOND-FLOOR STUDY

Part of the master suite, this cozy study with a built-in day bed has a stunning panoramic view of the property.

#### 03 SECOND-FLOOR HALL

The second-floor hall gets its character from the quirky angles of the roof. Baffles give texture to the ceiling and are reminiscent of a boat's hull. Dormer alcoves flood the hall with light and provide nooks for seating areas.







# WORKING EARTH

ORGANIC  
GARDENING and LANDSCAPING



field stone retaining  
wall and raised  
perennial bed

container gardens with  
ornamental flowers,  
greenery and herbs



natural stone path set  
into English style  
perennial garden

**Creating and Maintaining  
Dynamic Landscapes  
with the Right Approach**

**508.627.7094**  
**workingearthmarthasvineyard.com**