

Holiday Rooms

The Passion of Angus King

A Moser Reunion

MaineHOME+ DESIGN

November/December 2008

Dramatic Details

Reimagined architectural elements
transform classic style in Falmouth

Green in the City

Where a Portland architect
lives and works

Nov/Dec 2008

\$5.95

1 2>



0 74470 28888 6

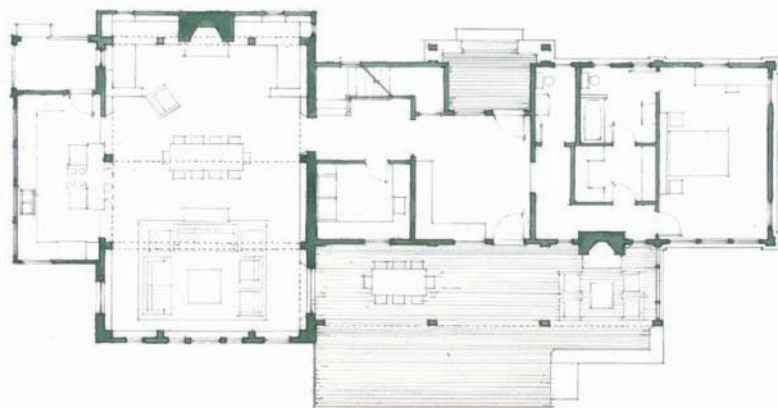
Downeast Island Home

Architect:
John Tittmann with Craig Gibson
Albert, Righter & Tittmann Architects

Builder:
Michael Westphal

Location: A downeast Maine island

Square Footage: 3,774



The organic, barn-like elements of this downeast island home are evident inside and out. The home's wood shingles and dark green trim visually link it to older homes nearby, while parts of a reclaimed barn were reassembled to provide the home's dominant living space. The aged exposed beams of the large room provide the framework for a warm, relaxed space that is anchored by a massive stone fireplace on the north wall and a wall of windows on the south; the towering windows provide expansive vistas of coastal waters. **MH+D**

